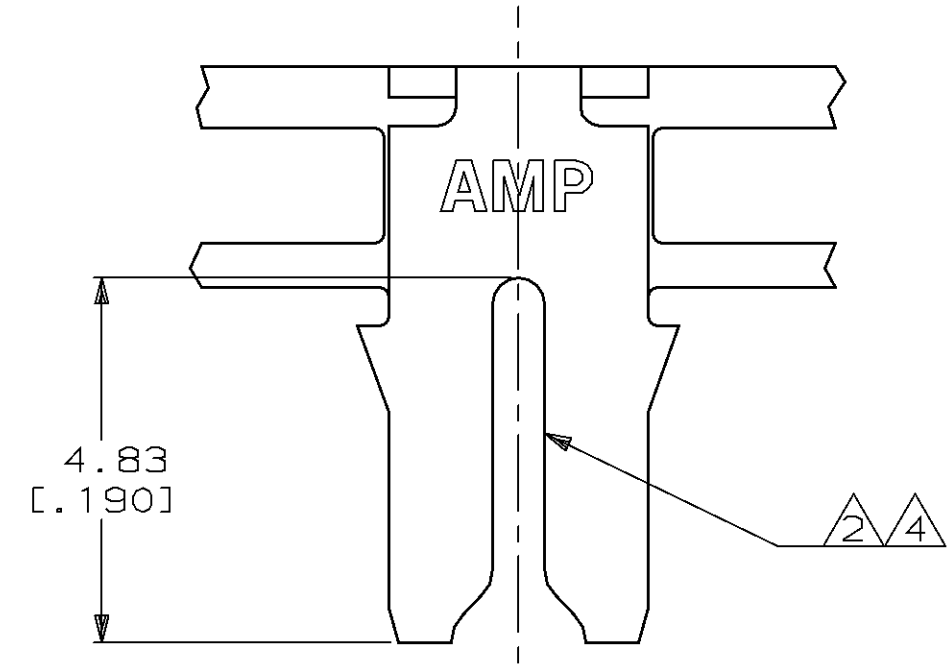
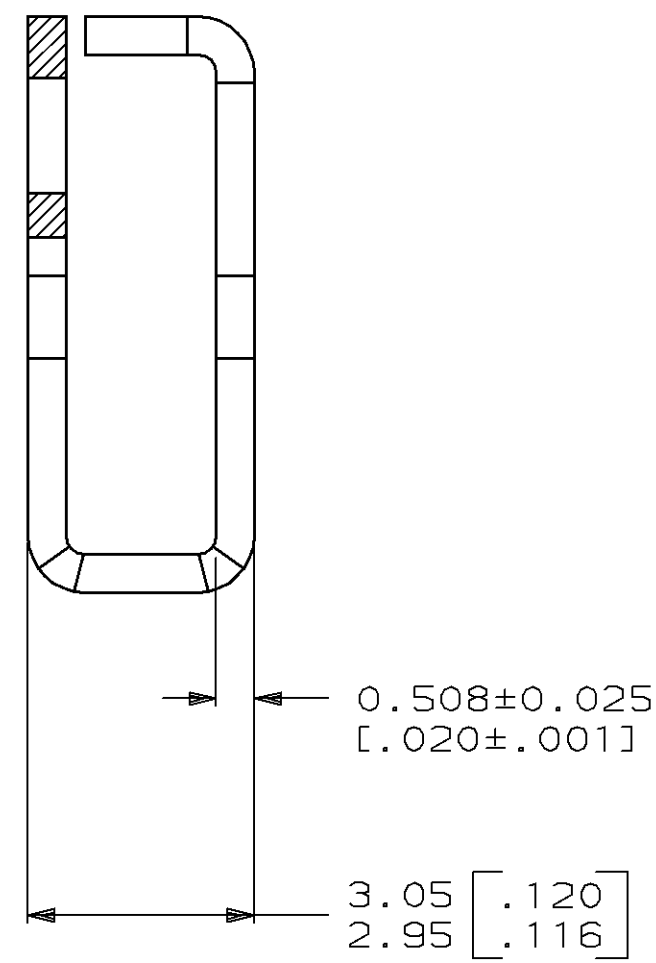
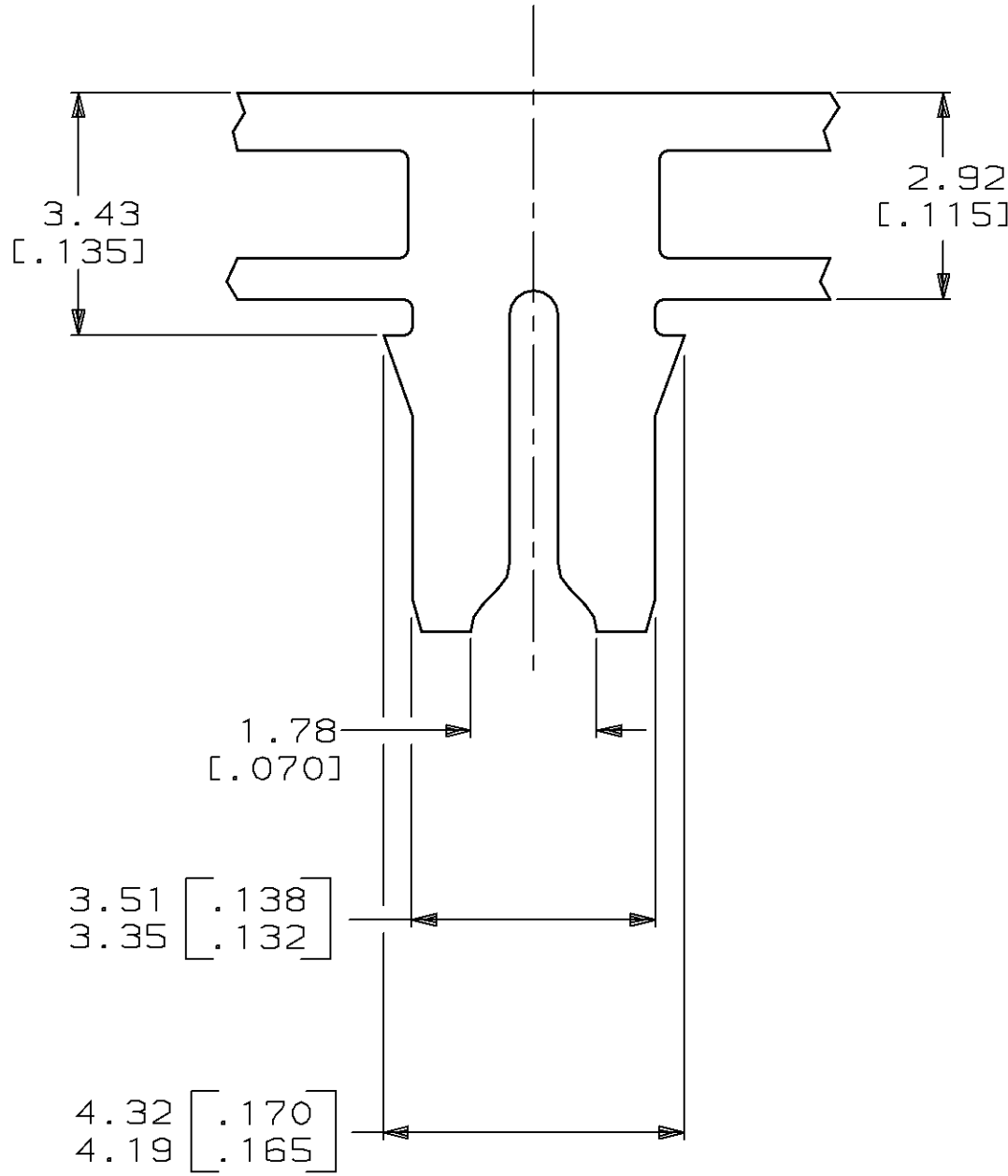
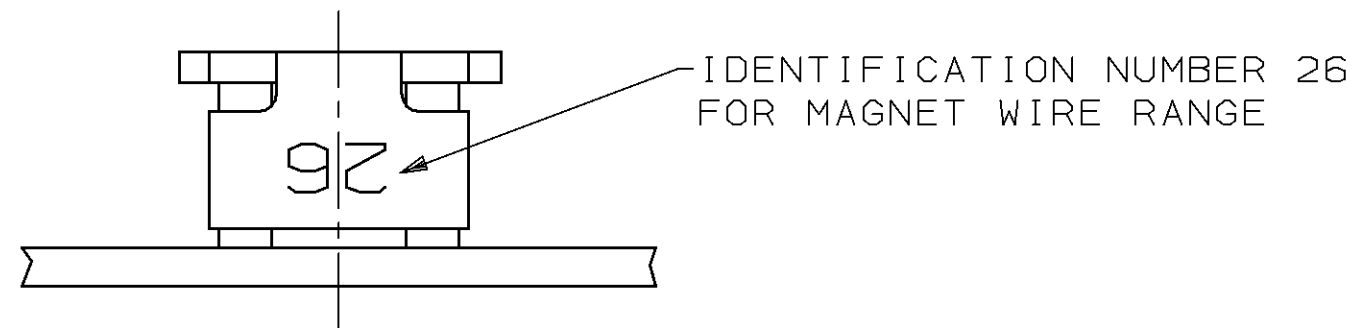


THIS DRAWING IS UNPUBLISHED. RELEASED FOR PUBLICATION, 19 .  
 © COPYRIGHT 19 BY AMP INCORPORATED. ALL INTERNATIONAL RIGHTS RESERVED.

LOC	DIST	P	F	ZONE	LTR	DESCRIPTION	DATE	APPD
AF	50					RELEASED PER P.R. 92-61	9/4/92	MF/NN

- 1 CONTINUOUS STRIP ON REELS WITH TERMINALS LOCATED ON 8.38 [.330] CENTERS.
- 2 SLOTTED TERMINALS A SINGLE 0.81-1.02mm [#20-#18] AWG BARE SOLID COPPER WIRE.
- 3 AFTER INSERTION INTO PLASTIC HOLDER TAB PORTION MUST BE BENT OVER 45° TO 90° OR POTTED-IN TO PREVENT PULL-OUT WHEN MATING RECEPTACLE IS DISCONNECTED.
- 4 SLOTTED TERMINALS ALSO TERMINATES A SINGLE 0.81mm [#20] AWG OR A 0.81 [.032] DIA COPPER CLAD STEEL WIRE PER ASTM B452-67 CLASS 40 A.



PROPOSED DESIGN  
 NOT RELEASED FOR  
 PRODUCTION

THIS DRAWING IS A CONTROLLED DOCUMENT FOR AMP INCORPORATED. IT IS SUBJECT TO CHANGE AND THE CONTROLLING ENGINEERING ORGANIZATION SHOULD BE CONTACTED FOR THE LATEST REVISION.

DO NOT SCALE PRINT. UNLESS SPECIFIED DIMENSIONS IN mm [INCHES] TOLERANCES ON: 2 PLC DEC ± 0.25 [.010] 3 PLC DEC ± - ANGLES ± -		DR 8/6/93 MICHAEL S. FEHER	AMP Incorporated Harrisburg, PA 17105-3608		
MATERIAL 4M BRASS		CHK - LORI A. MAYER			
FINISH 0.002032 [.000080] MIN TIN PER MIL-T-10727		APPD - NELSON E. NEFF	NAME  TERMINAL, SPLICE, MAG-MATE™		
APPLICATION SPEC 114-2046		APPD - TERRY L. SHUTTER			
WEIGHT -		PRODUCT SPEC 108-2012	SIZE C	CAGE CODE 00779	DRAWING NO C=62903
		SCALE 10:1	SHEET 1 OF 1		

62903-1  
 PART NO

CUSTOMER DRAWING